

PROTECTION OF SURVIVORS OF HUMAN TRAFFICKING

Presentation By: Marietta Latonio

April 11, 2019

PASTORAL ORIENTATIONS ON HUMAN TRAFFICKING

*"Isn't this surely the fast worth choosing:
releasing those unjustly bound,
undoing their heavy burdens?
letting the oppressed go free,
breaking every yoke?"*

- Isaiah 58



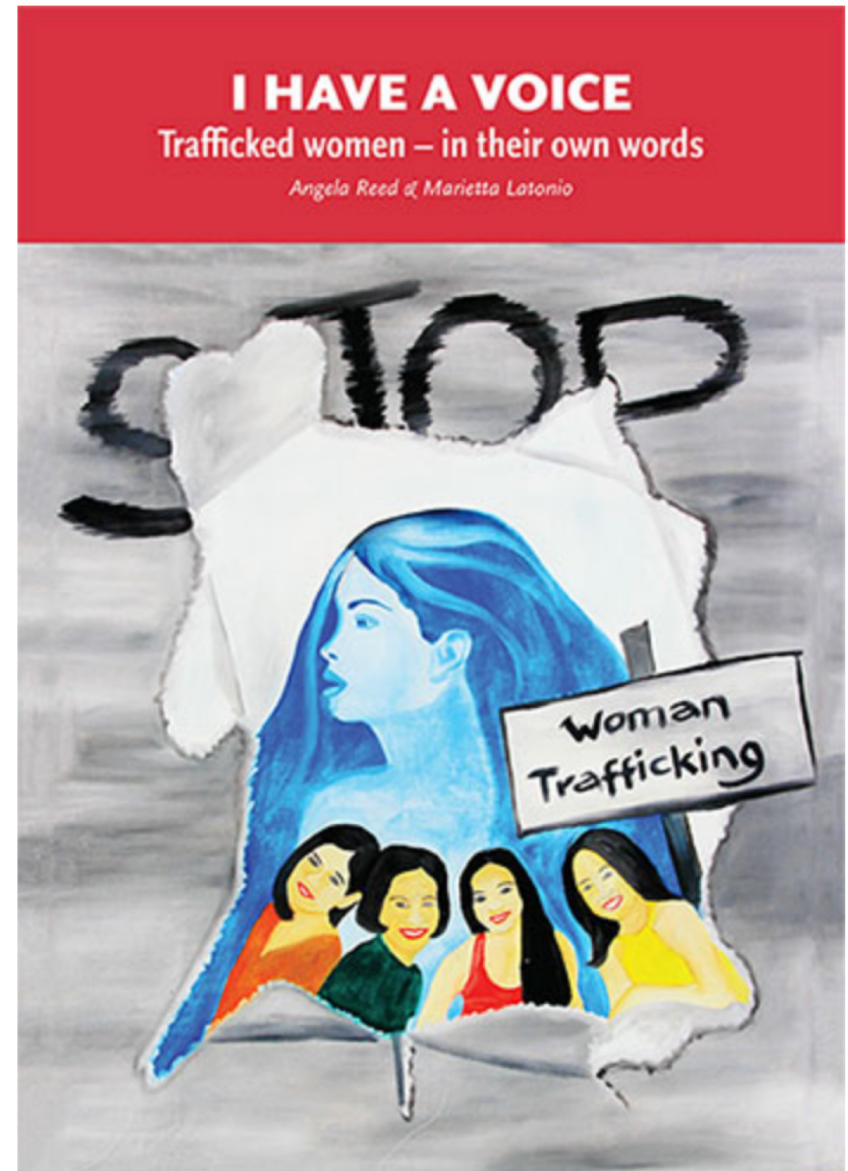
PROTECTION OF SURVIVORS

OUTLINE

- Experience; Research Projects and Highlights
- Framework for Analysis (Anti-Oppressive Practice)
- Recommendations

RESEARCH PROJECTS

- Vulnerability of Women and Children to Human Trafficking, Cebu, Philippines
- Perceptions of Women and Children Survivors of Human Trafficking on the Effectiveness of Government and Non-Government Interventions



RESEARCH HIGHLIGHTS



Parental absence is a
common theme of
vulnerability

Human trafficking is not a
one-time phenomenon

- Certain inequalities and vulnerabilities have been woven into their life trajectories
- Affected their personhood

RESEARCH HIGHLIGHTS



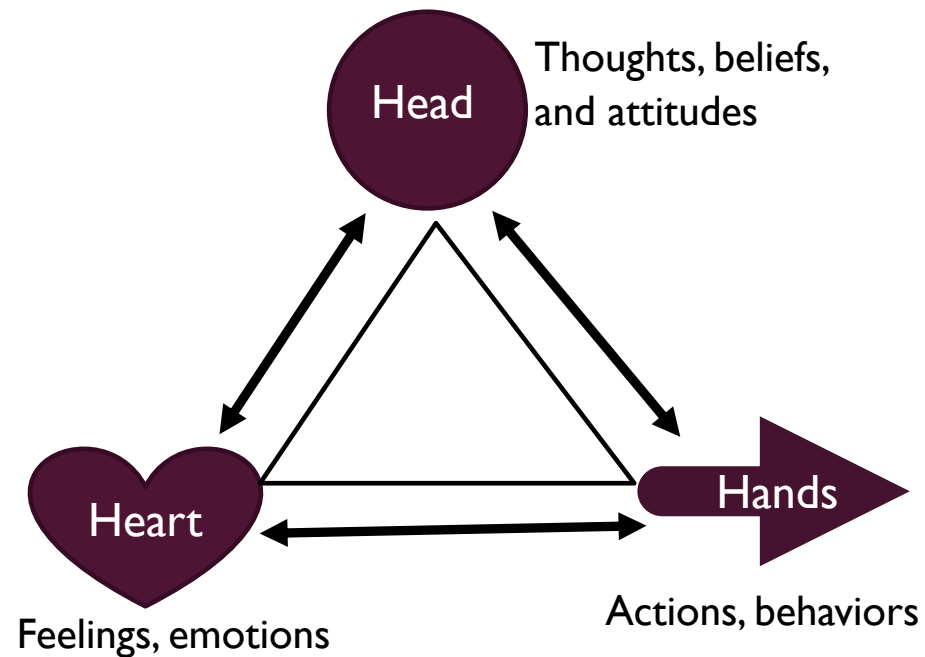
Trafficking situation brought pain (physical and emotional), hatred and behavioural changes



Interventions were focused more on personal healing

ANTI -OPPRESSIVE PRACTICE: FRAMEWORK OF ANALYSIS

Personal – examine our own personal thoughts, feelings, actions and attitudes toward human trafficking

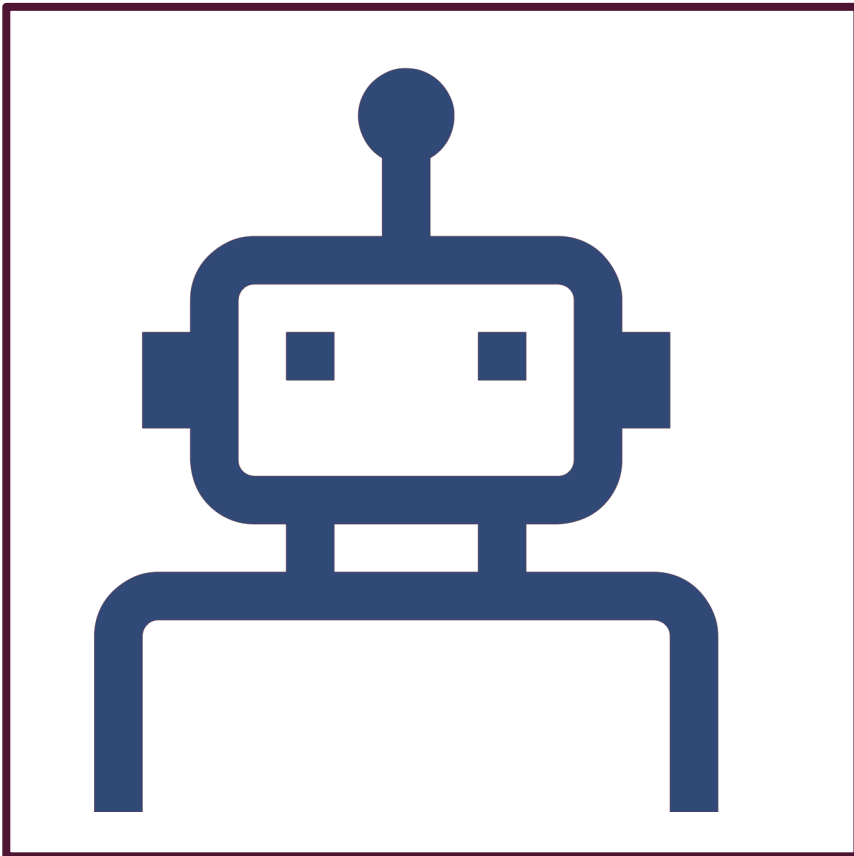


ANTI-OPPRESSIVE PRACTICE: FRAMEWORK OF ANALYSIS



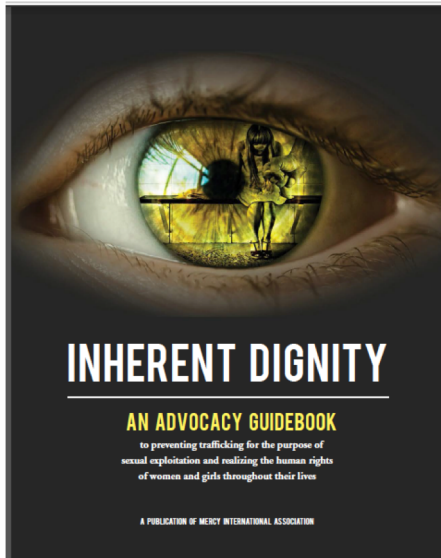
Cultural level – refers to the “shared values or commonalities” that can form a community consensus

ANTI-OPPRESSIVE PRACTICE: FRAMEWORK OF ANALYSIS



- Structural Level – looking into different societal structures that affect human trafficking phenomenon

RECOMMENDATIONS



- Challenge the worldview of people working in Catholic dioceses, parishes and religious congregations, schools and universities about Human Trafficking
- Human Rights perspective is referenced for advocacy and preventative programs



REFLECTION

- **So what and how** do we respond to these questions as we encounter victims/survivors of human trafficking. What kind of protection/ care/ prevention measures do you believe are necessary



REFLECTION

- Our interventions, at local (including in our own parishes) may either reinforce pain and indignity felt by the victim/survivors
- Or provide respect to their personhood.



RECOMMENDATIONS



DISCUSSION PLATFORM
IN THE LOCAL SETTING



RESEARCH AS BASIS FOR
FURTHER POLICY PLANNING
AND PROGRAM
DEVELOPMENT



CONTINUOUS
ESTABLISHING OF
COLLABORATIVE
MECHANISMS WITHIN
LOCAL AND
INTERNATIONAL LEVELS



THANK YOU!

